



Wasatch Choice 2050 Vision

September 26, 2019









Utah is Growing













WASATCH CHOICE

— 2050 —



Wasatch Choice 2050 – Vision For Our Future



Four Key Strategies

1 Provide transportation choices

2 Support housing options

3 Preserve open space

4 Link economic development with transportation and housing decisions

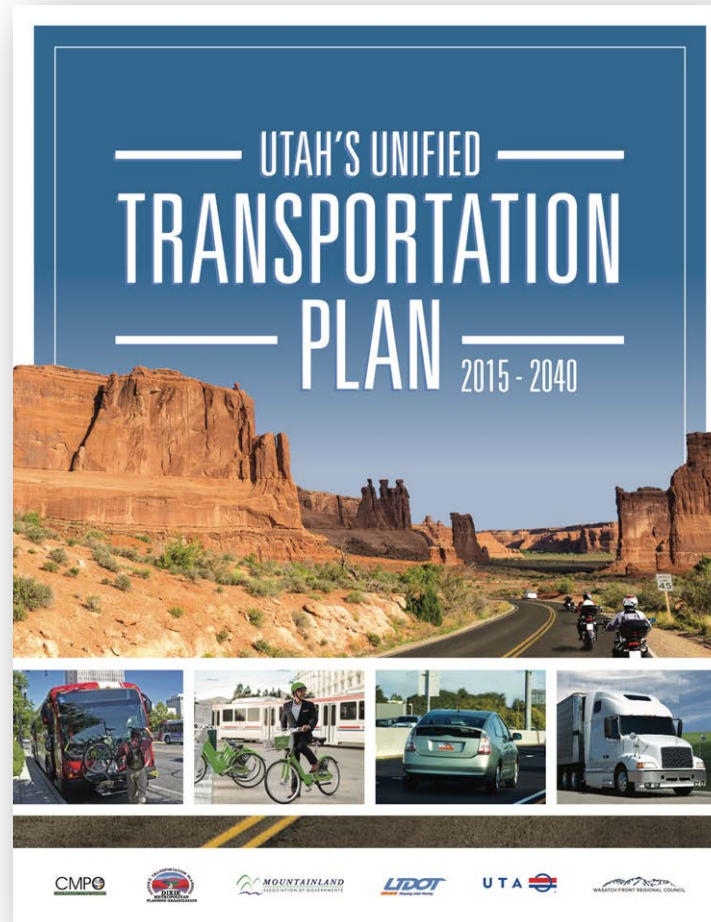
Four Key Strategies

1 Provide
transportation choices

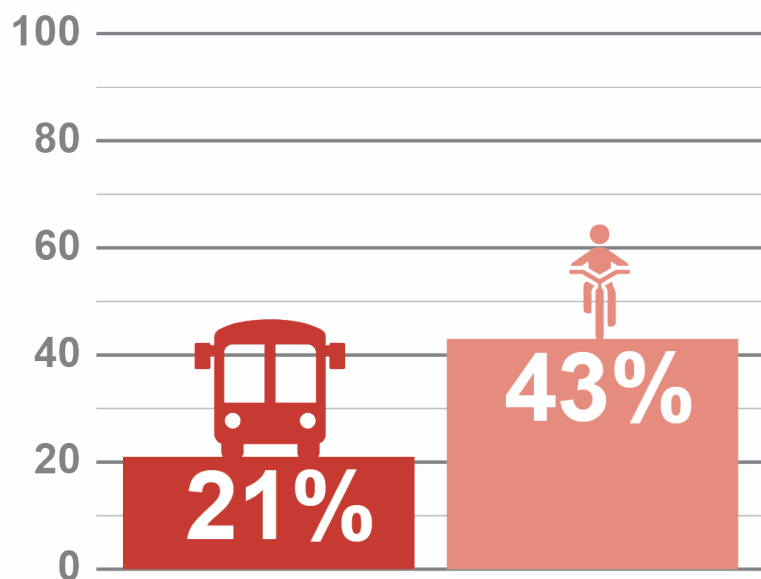
Strategy 1: Provide Transportation Choices



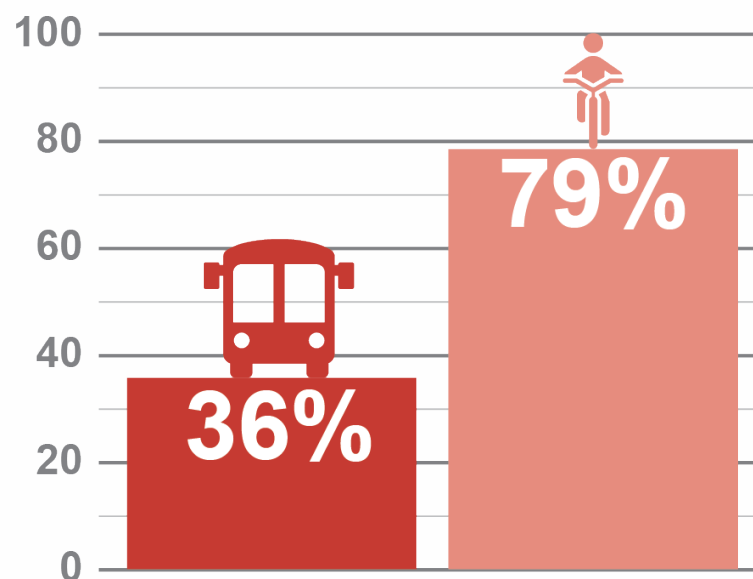
Strategy 1: Provide Transportation Choices



Strategy 1: Provide Transportation Choices



Today



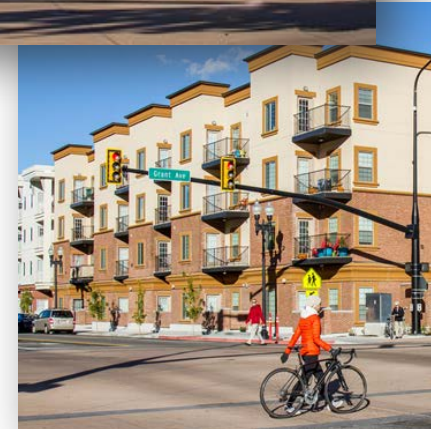
WC2050 Vision

Four Key Strategies

1 Provide
transportation choices

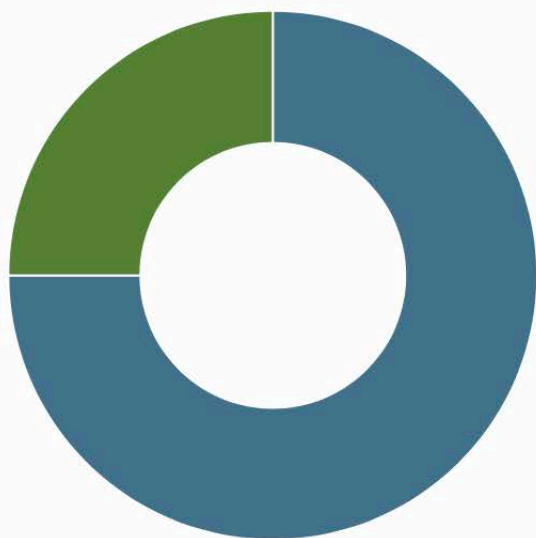
2 Support
housing options

Strategy 2: Support Housing Options



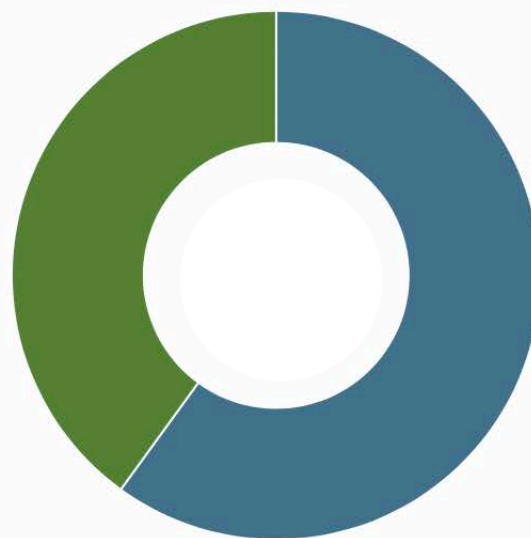
Strategy 2: Support Housing Options

Today



- Single-Family: 75%
- Multi-Family/Townhouse: 25%

Vision



- Single-Family: 60%
- Multi-Family/Townhouse: 40%

Four Key Strategies

1 Provide
transportation choices

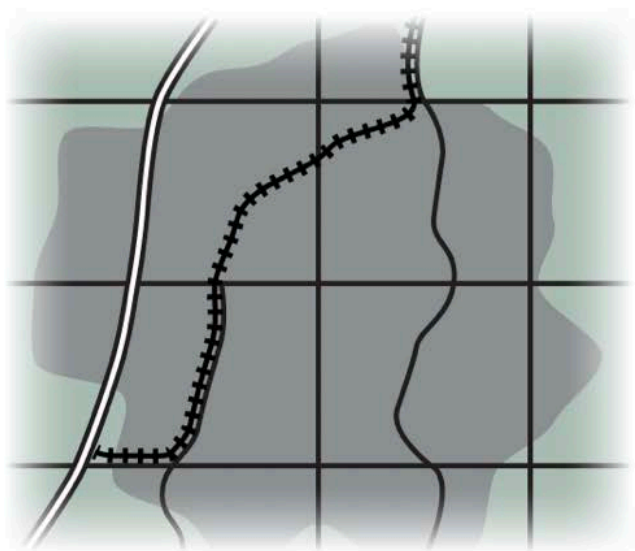
3 Preserve
open space

2 Support
housing options

Strategy 3: Preserve Open Space

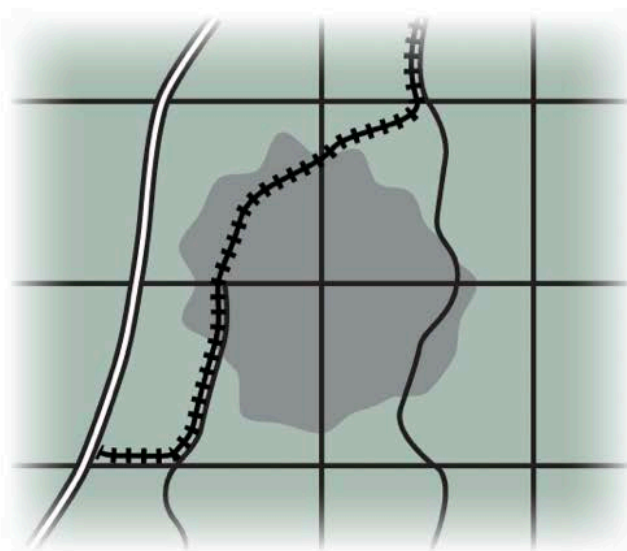


Strategy 3: Preserve Open Space



Current Path

27,400
Acres
Saved



Vision

Four Key Strategies

1 Provide transportation choices

2 Support housing options

3 Preserve open space

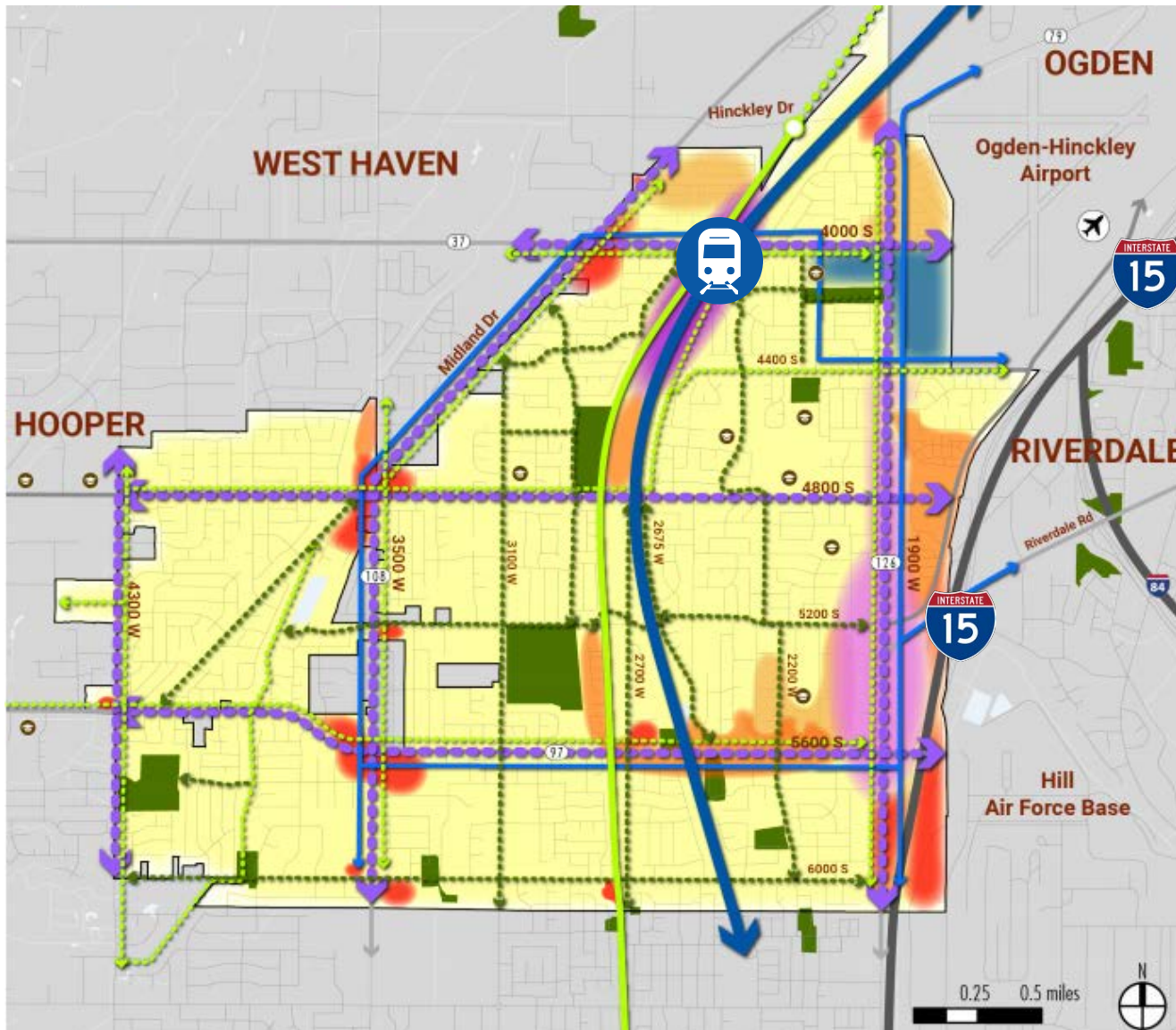
4 Link economic development with transportation and housing decisions

Strategy 4: #WhereMatters Development with Transportation and Housing Decisions



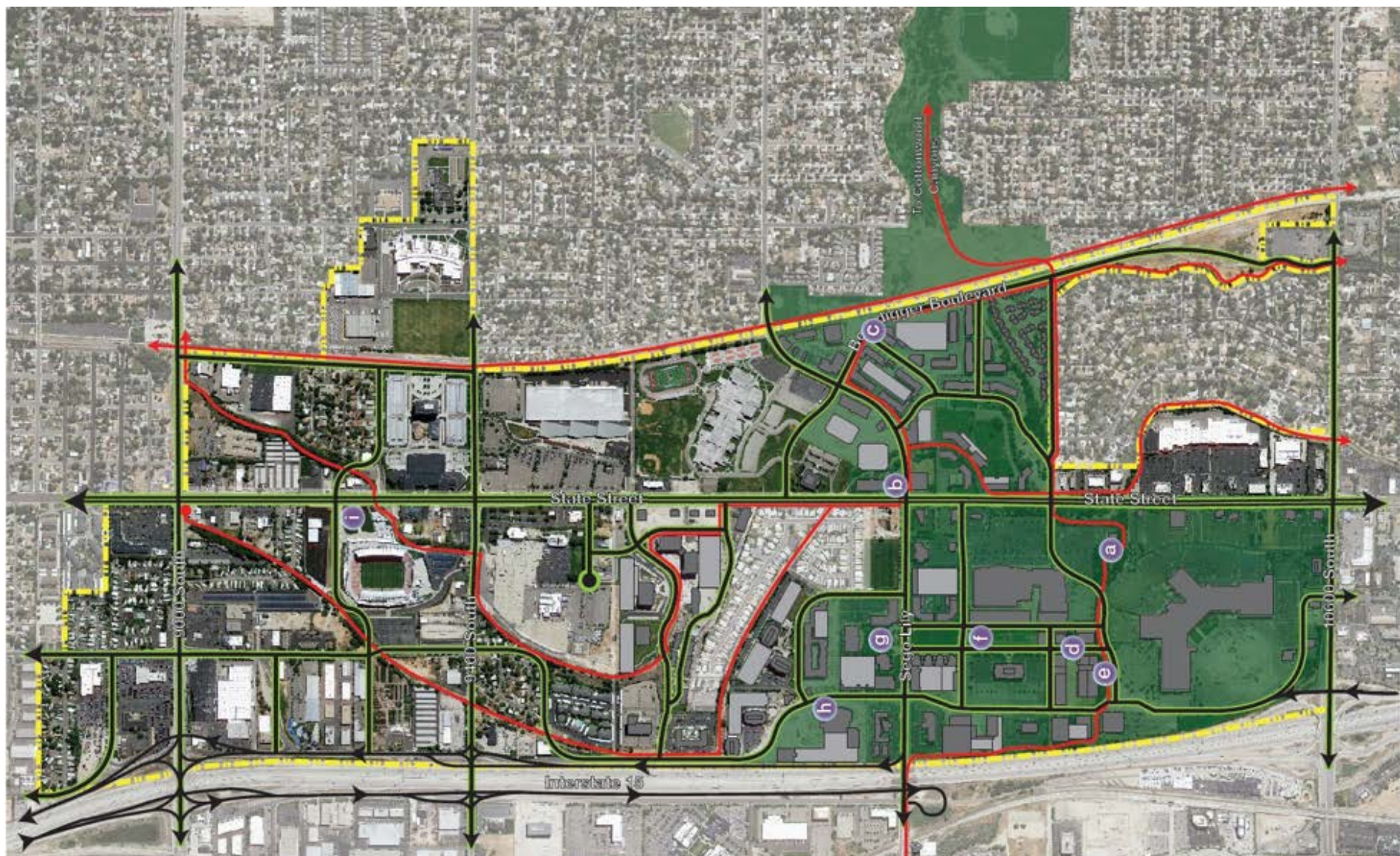
Strategy 4: #WhereMatters



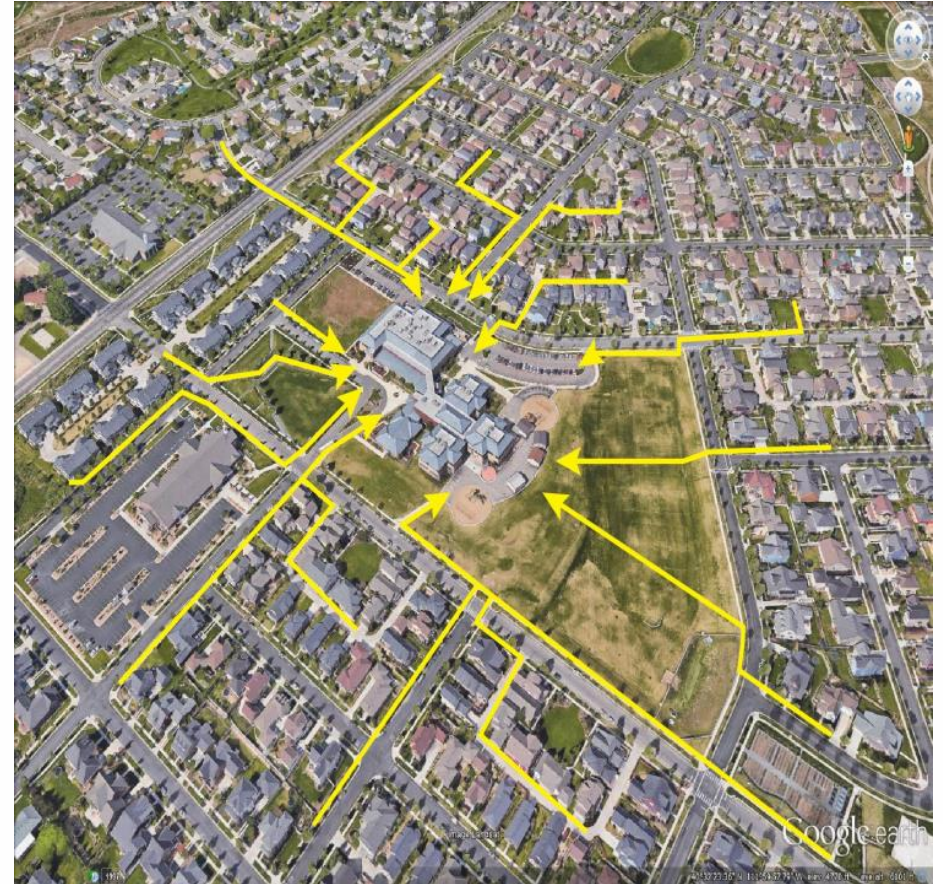
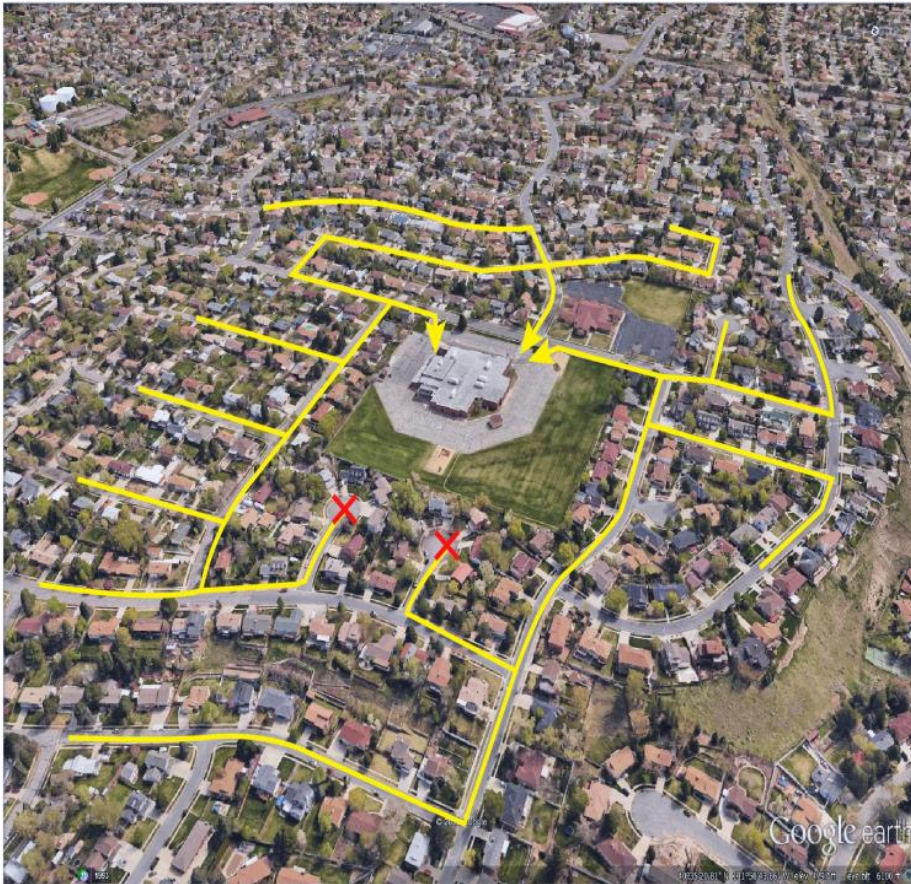


The Cairns - A New Downtown for Sandy





Community Design Example: Connected Streets



WASATCH CHOICE 2050

VISION FOR OUR FUTURE

Utah is growing... and we have a plan. Our future quality of life depends on the choices we make today. Wasatch Choice 2050 is our communities' shared vision for transportation investments, development patterns, and economic opportunities. The Vision map and key strategies show how advancing the Vision can enhance quality of life even as we grow.

Key Strategies

The Wasatch Choice 2050 Vision is built on four key strategies:

1. Provide transportation choices
2. Support housing options
3. Preserve open space
4. Link economic development with transportation and housing decisions

Benefits of the Vision

Implementing the Wasatch Choice 2050 Vision promotes high quality of life now and for generations to come.

- Livable and healthy communities
- Access to economic and educational opportunities
- Manageable and reliable traffic conditions
- Quality transportation choices
- Safe, user friendly streets
- Clean air
- Housing choices and affordable living expenses
- Locally responsible communities and infrastructure
- Sustainable environment
- Ample open space and recreational opportunities

Regional Land Uses

A thriving region requires great places, from a bustling metropolitan center to quiet open spaces.



Transportation Modes

As our region continues to grow, we need choices for how to move around.



Partners of the Vision

The Wasatch Choice 2050 Vision is built on community values and public input, sharing the desired future for the region. The following organizations facilitated this process:

- Wasatch Front Regional Council
- Mountainland Association of Governments
- Chambers of Commerce
- Eastern Utah
- Kern C. Gardner Policy Institute
- Metropolitan Research Center at The University of Utah
- Utah Association of Counties
- Utah Department of Transportation
- Utah League of Cities and Towns
- Utah Transit Authority

wfrc.org/wc2050





Wasatch Choice Map



Vision

Transportation

Land Use

Economic Development

Recreation



RESIDENTIAL



OPEN SPACE



EMPLOYMENT



INDUSTRIAL

Transportation Modes

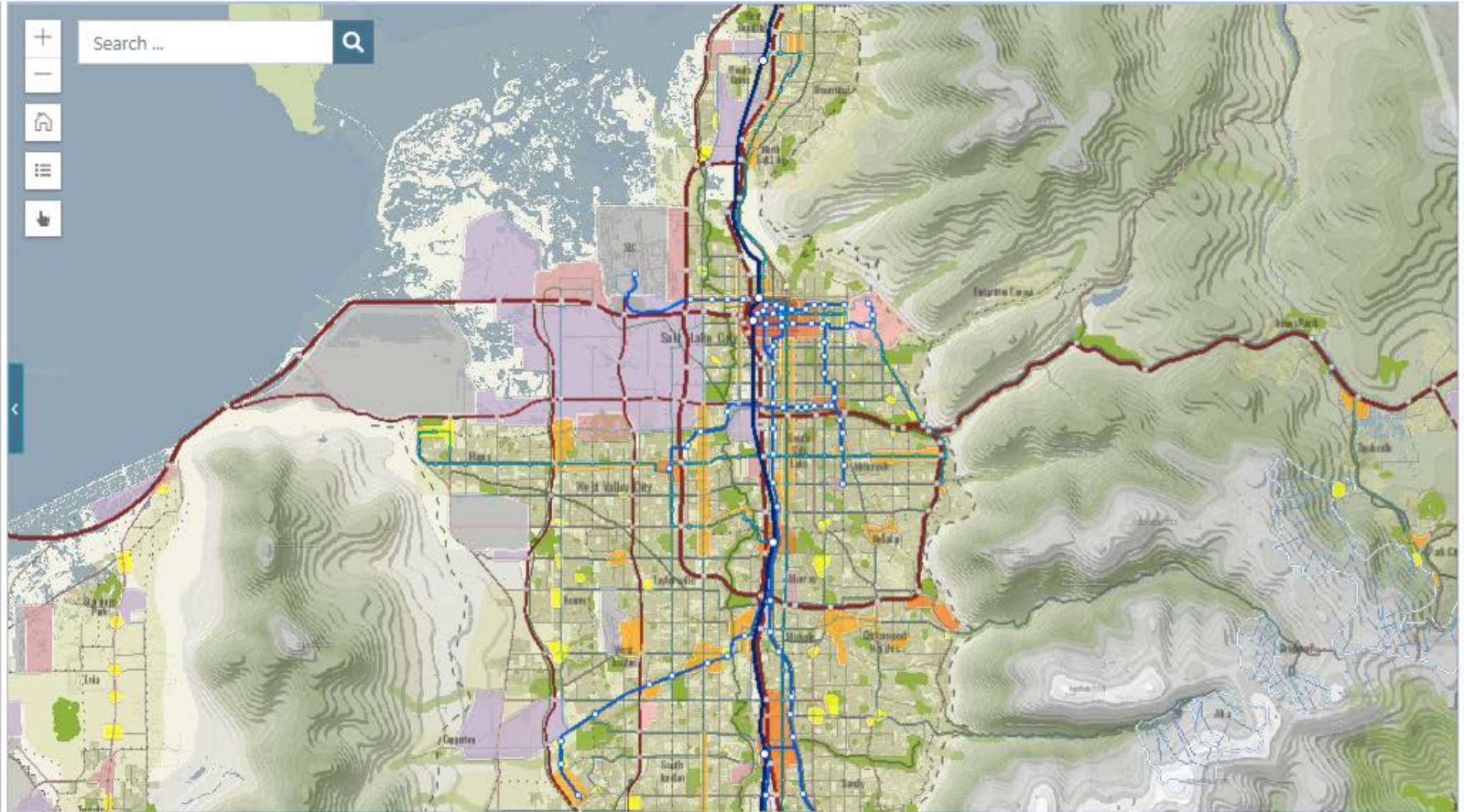
As our region continues to grow, we need choices for how to move around.



Partners of the Vision

The Wasatch Choice 2050 Vision is built on community values and public input, shaping the desired future for the region. The following organizations facilitated this process:

- Wasatch Front Regional Council
- Mountainland Association of Governments
- Chambers of Commerce
- Envision Utah
- Kern C. Gardner Policy Institute
- Metropolitan Research Center at The University of Utah
- Utah Association of Counties
- Utah Department of Transportation
- Utah League of Cities and Towns
- Utah Transit Authority





Wasatch Choice Map



Vision

Transportation

Land Use

Economic Development

Recreation



RESIDENTIAL



OPEN SPACE



EMPLOYMENT



INDUSTRIAL

Transportation Modes

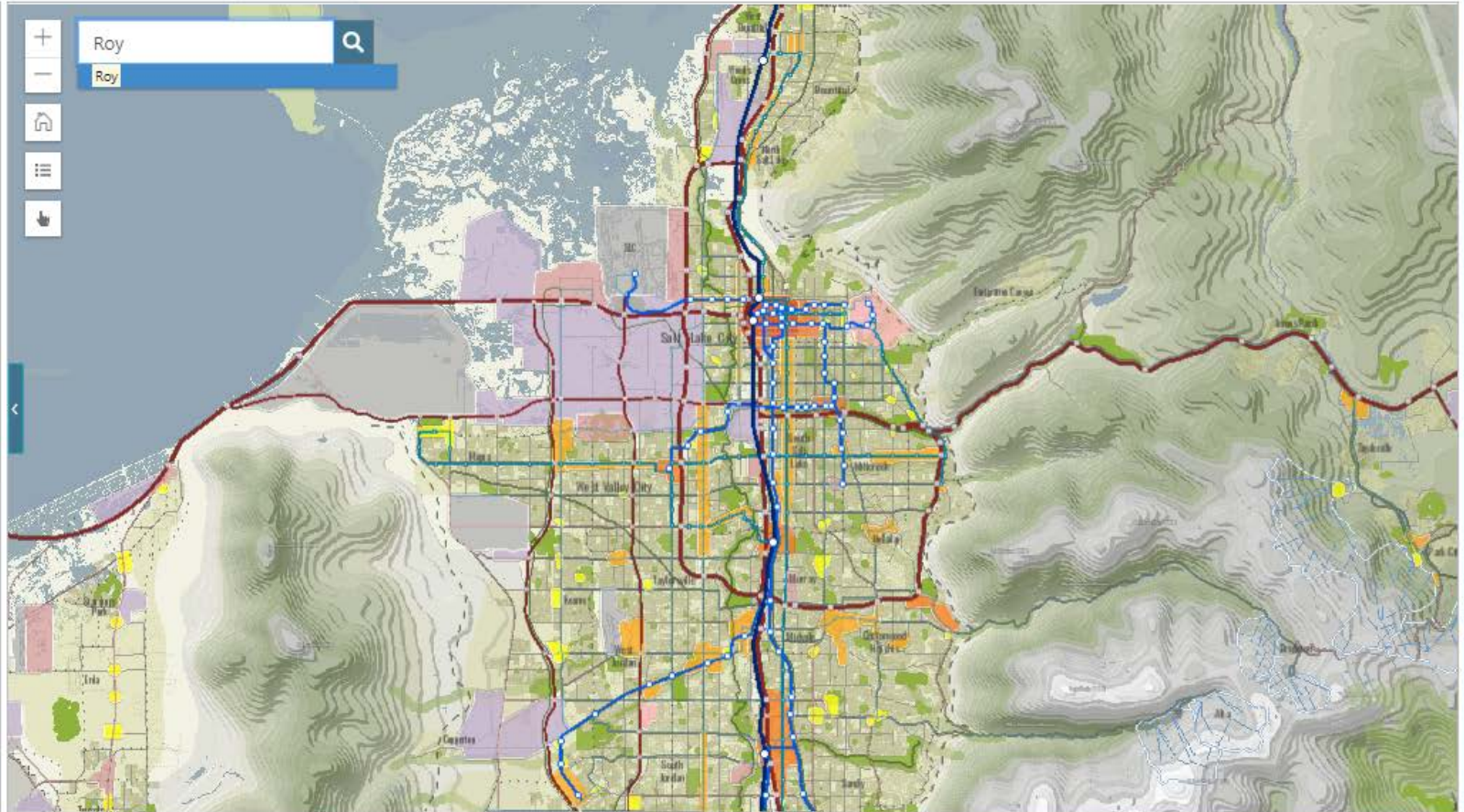
As our region continues to grow, we need choices for how to move around.



Partners of the Vision

The Wasatch Choice 2050 Vision is built on community values and public input, shaping the desired future for the region. The following organizations facilitated this process:

- Wasatch Front Regional Council
- Mountainland Association of Governments
- Chambers of Commerce
- Envision Utah
- Kern C. Gardner Policy Institute
- Metropolitan Research Center at The University of Utah
- Utah Association of Counties
- Utah Department of Transportation
- Utah League of Cities and Towns
- Utah Transit Authority





Wasatch Choice Map

Vision

Transportation

Land Use

Economic Development

Recreation



VISION FOR OUR FUTURE

Utah is growing... and we have a plan. Our future quality of life depends on the choices we make today. Wasatch Choice 2050 is our communities' shared vision for transportation investments, development patterns, and economic opportunities. The Vision map and key strategies show how advancing the Vision can enhance quality of life even as we grow.

Key Strategies

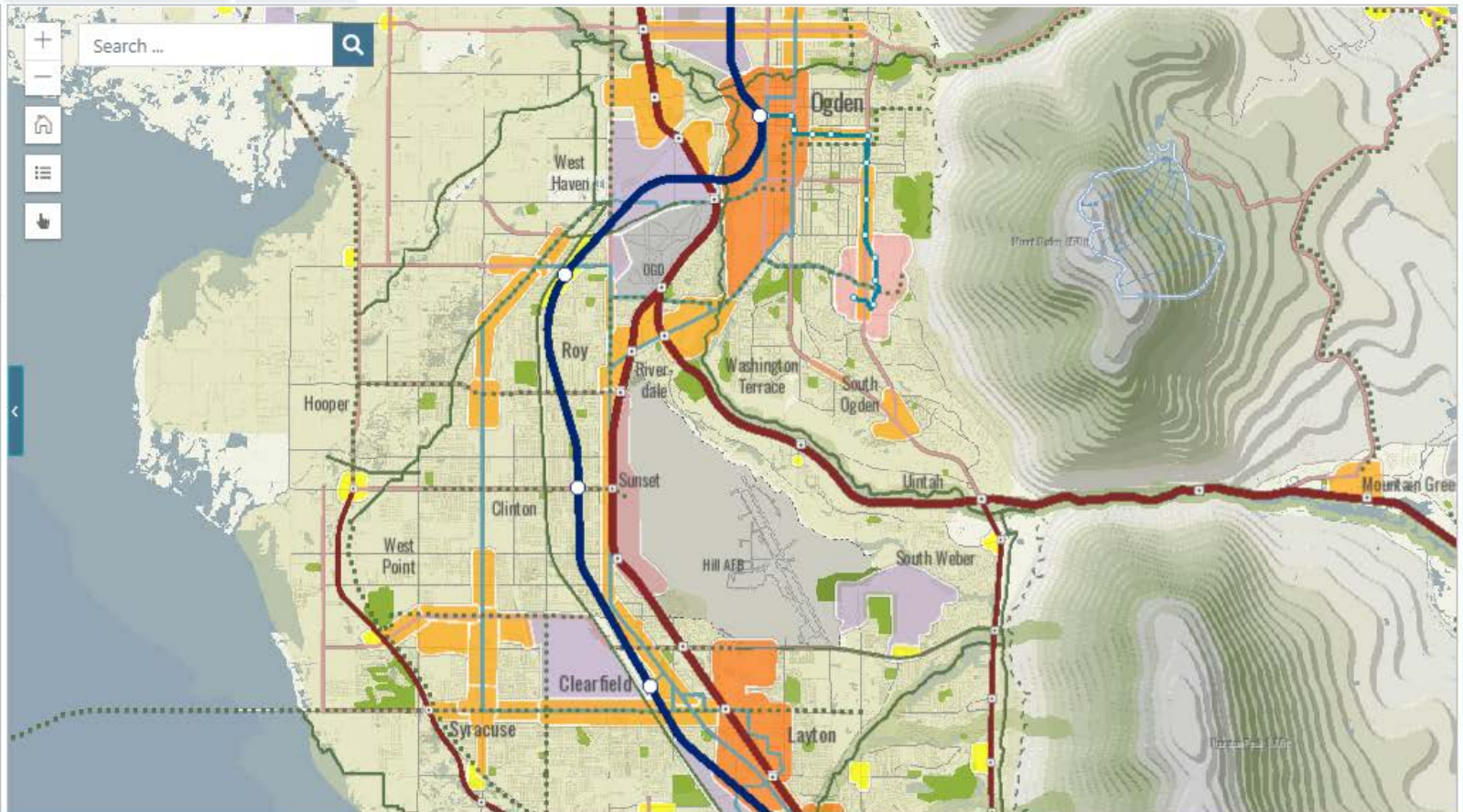
The Wasatch Choice 2050 Vision is built on four key strategies:

- 1 Provide transportation choices
- 2 Support housing options
- 3 Preserve open space
- 4 Link economic development with transportation and housing decisions

Benefits of the Vision

Implementing the Wasatch Choice 2050 Vision promotes high quality of life now and for generations to come.

- Livable and healthy communities
- Access to economic and educational opportunities
- Manageable and reliable traffic conditions
- Quality transportation choices
- Safe, user friendly streets
- Clean air
- Housing choices and affordable living expenses



Wasatch Choice Map

← → ↺ 🔒

wfrc.org/wasatch-choice-map/#currentTabIndex=1&scale=144448&sideBarClosed=false&x=-12466612&y=5035677

🔍 ⭐ 🔄 📄 👤 ⋮

Wasatch Choice Map

🌿 🏠 🚗 🏡

WASATCH CHOICE

2050

Vision

Transportation

Land Use

Economic Development

Recreation

Click on any project on the map to see detailed information including estimated costs and phasing.

More detailed RTP information:

• **WFRC RTP document & RTP webmaps** (for Salt Lake, Davis, Weber, & Southern Box Elder Counties)

• **MAG RTP document & RTP webmaps** (for Utah County)

REGIONAL TRANSPORTATION PLAN

MAG

Wasatch Back and Tooele Valley rural planning organizations work with UDOT to produce long-range transportation plans. These will be incorporated as they are finalized in the coming months.

App Version: 1.2.0

+

−

🏠

📄

👤

⋮

Search ... 🔍

Map showing transportation projects in the Wasatch Choice area, including routes and project locations. Key locations labeled include Ogden, South Ogden, Washington Terrace, Uintan, South Weber, Peterson, Layton, Clarksfield, Sunnyside, Clinton, Roy, West Point, West Haven, Riverdale, and Hooper. The map displays various colored lines representing different transportation projects and areas.



Wasatch Choice Map

Vision

Transportation

Land Use

Economic Development

Recreation



Click on any project on the map to see detailed information including estimated costs and phasing.

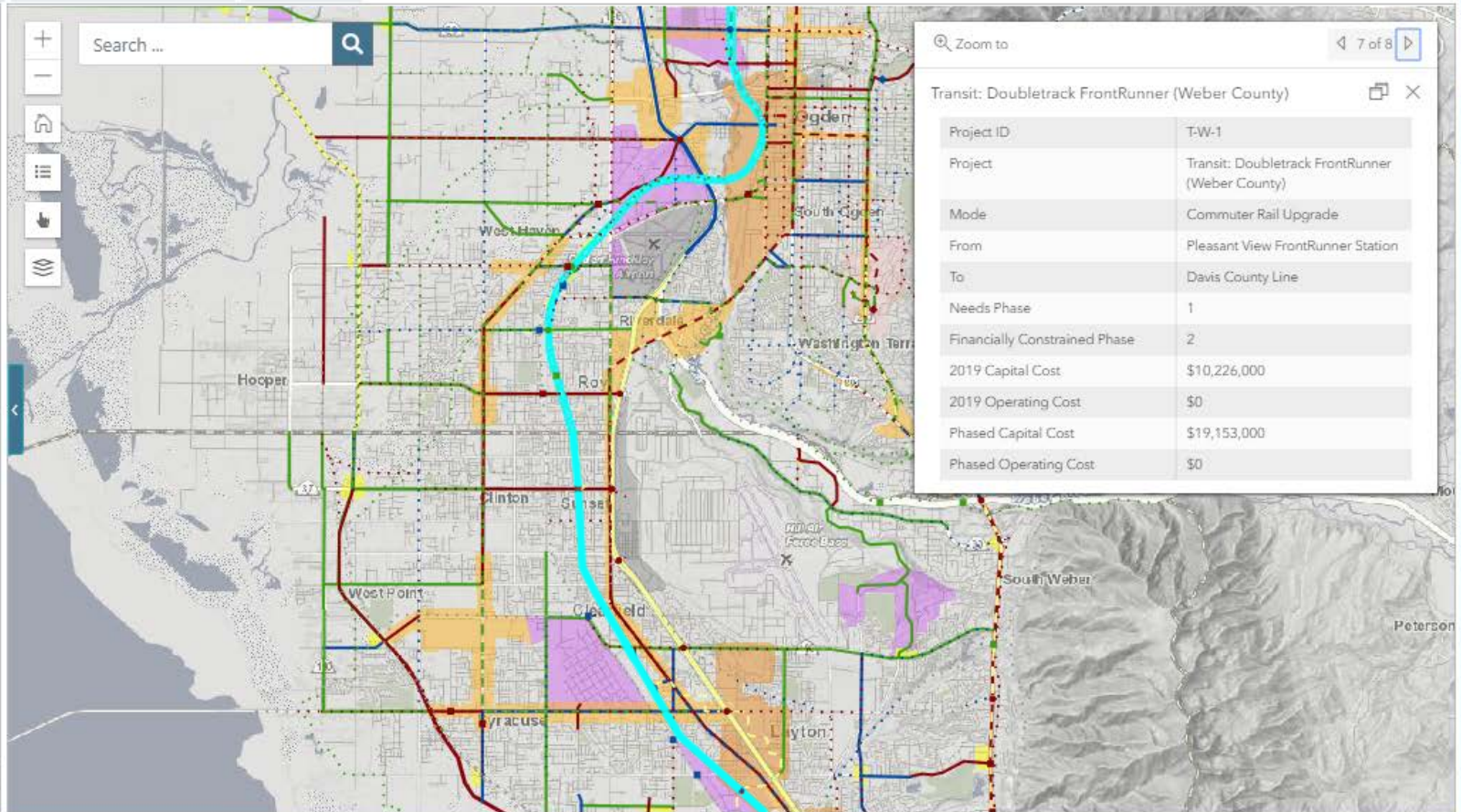
More detailed RTP information:

- [WFRC RTP document & RTP webmaps](#) (for Salt Lake, Davis, Weber, & Southern Box Elder Counties)
- [MAG RTP document & RTP webmaps](#) (for Utah County)



Wasatch Back and Tooele Valley rural planning organizations work with UDOT to produce long-range transportation plans. These will be incorporated as they are finalized in the coming months.

App Version: 1.2.0





Wasatch Choice Map

Vision

Transportation

Land Use

Economic Development

Recreation



Click on any project on the map to see detailed information including estimated costs and phasing.

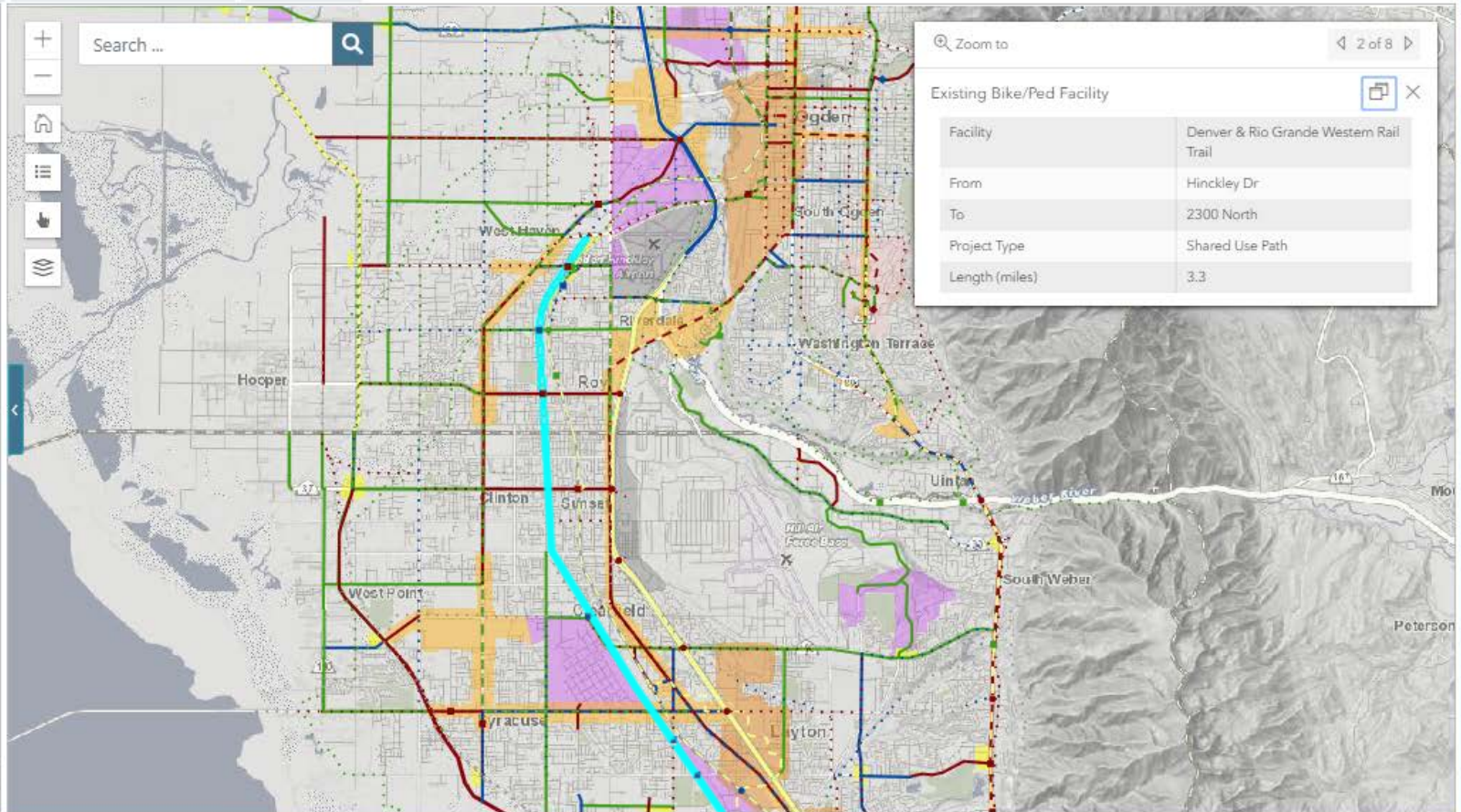
More detailed RTP information:

- [WFRC RTP document & RTP webmaps](#) (for Salt Lake, Davis, Weber, & Southern Box Elder Counties)
- [MAG RTP document & RTP webmaps](#) (for Utah County)



Wasatch Back and Tooele Valley rural planning organizations work with UDOT to produce long-range transportation plans. These will be incorporated as they are finalized in the coming months.

App Version: 1.2.0





Wasatch Choice Map

Vision

Transportation

Land Use

Economic Development

Recreation



By default, this land use map shows a hierarchy of centers together with other regionally significant land uses. You can explore these categories in the graphic below.



METROPOLITAN CENTER



URBAN CENTER



CITY CENTER



NEIGHBORHOOD CENTER



RESIDENTIAL



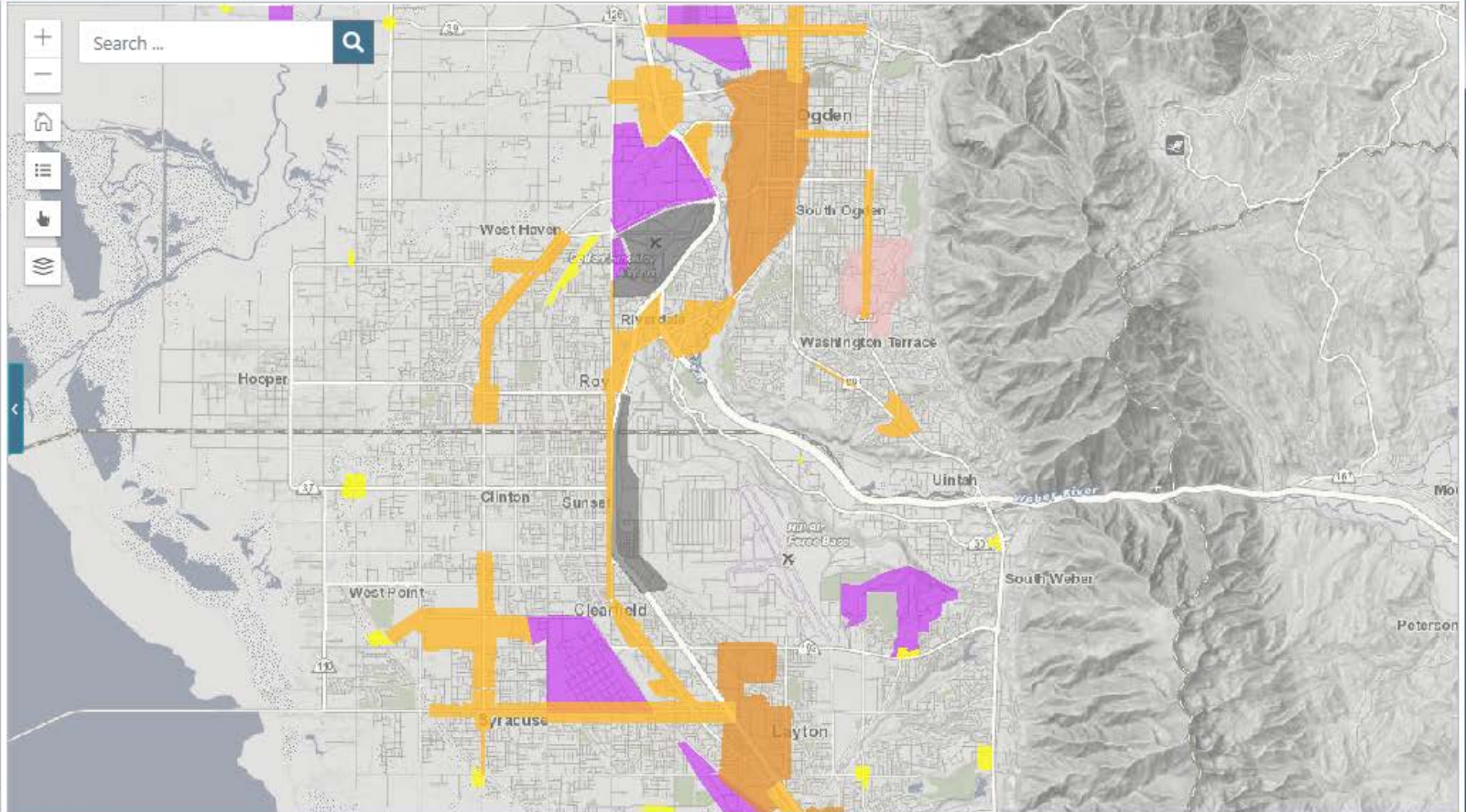
OPEN SPACE



EMPLOYMENT



INDUSTRIAL





Wasatch Choice Map

Vision

Transportation

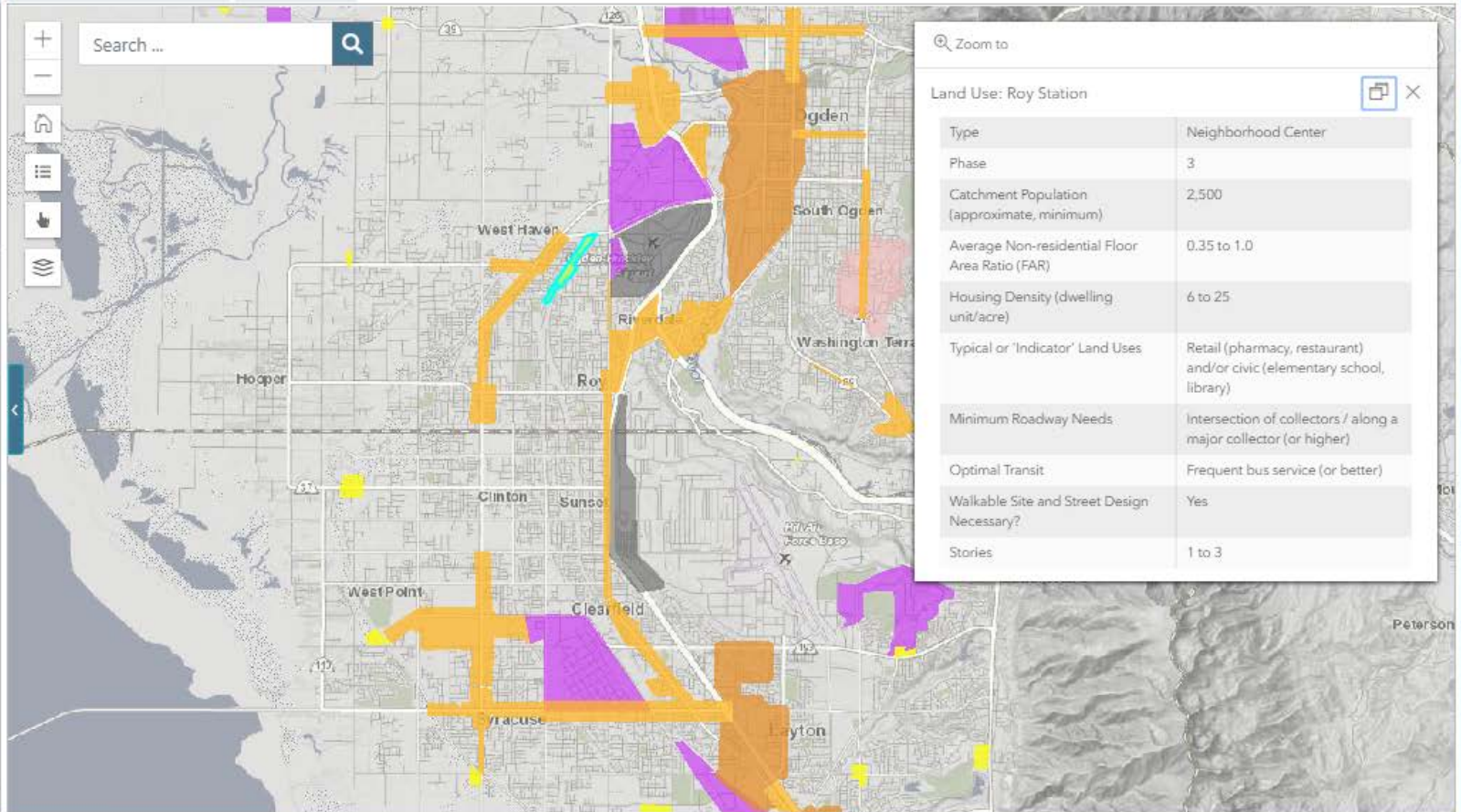
Land Use

Economic Development

Recreation

**Population and Employment Projections**

Utah's population continues to grow. Internal growth, from our own kids and grandkids, continues to be the largest



Wasatch Choice Map

← → ↺ 🔒

wfrc.org/wasatch-choice-map/#currentTabIndex=3&scale=144448&sideBarClosed=false&x=-12466612&y=5035677

🔍 ☆ 🌐 📄 👤 ⋮

Wasatch Choice Map

🌐 🏠 🚗 🏞️

WASATCH CHOICE
2050

Vision Transportation Land Use **Economic Development** Recreation

Our region is represented by both the **Wasatch Front Economic Development District (WFEDD)** and **Mountainland Economic Development District (MEDD)**. These Districts further regional economic development through coordination of longer term planning activities, and the implementation of region-level Comprehensive Economic Development Strategies (CEDs).

2018-2023

COMPREHENSIVE
ECONOMIC
DEVELOPMENT
STRATEGY

+

-

📄

📏

📍

📶

Search ...

🔍

Wasatch Choice Map

← → ↺ 🔒

wfrc.org/wasatch-choice-map/#currentTabIndex=3&scale=144448&sideBarClosed=false&x=-12466573&y=5035638

🔍 ☆ 🌐 📄 👤 ⋮

Wasatch Choice Map

Vision

Transportation

Land Use

Economic Development

Recreation

CDR and RDA areas, and transit

Oriented Developments. This map can easily be cross referenced with information on the transportation and land use tabs to help communities identify the most effective locations for development and investment, as well as how to maximize use of programs and incentives.

Utah Strategic Industry Clusters:

- The Districts have aligned their economic development efforts with the Governor's Office of Economic Development Strategic Industry Clusters. Utah's industry clusters are aerospace and defense, energy, financial services, life sciences, outdoor products and recreation, and software and IT. Nurturing industry clusters helps our state sustain a competitive business advantage

Opportunity Zones:

- Opportunity Zones are areas determined by the US census as "low-income communities." Designated Opportunity Zones

+

-

📄

📏

👤

🏠

Search ...

🔍

🔍 Zoom to

Tax Entity

Entity	Redevelopment Project Area #2 - Roy City
Code	(B-3)
Website	www.webercountyutah.gov/weber-edp
Name	Ron Kusina
Phone	801-621-8300 ext 3013
E-mail	ron@echamber.cc

Map

West Haven

South Ogden

Hooper

Uintah

South Weber

Peterson


Stacy

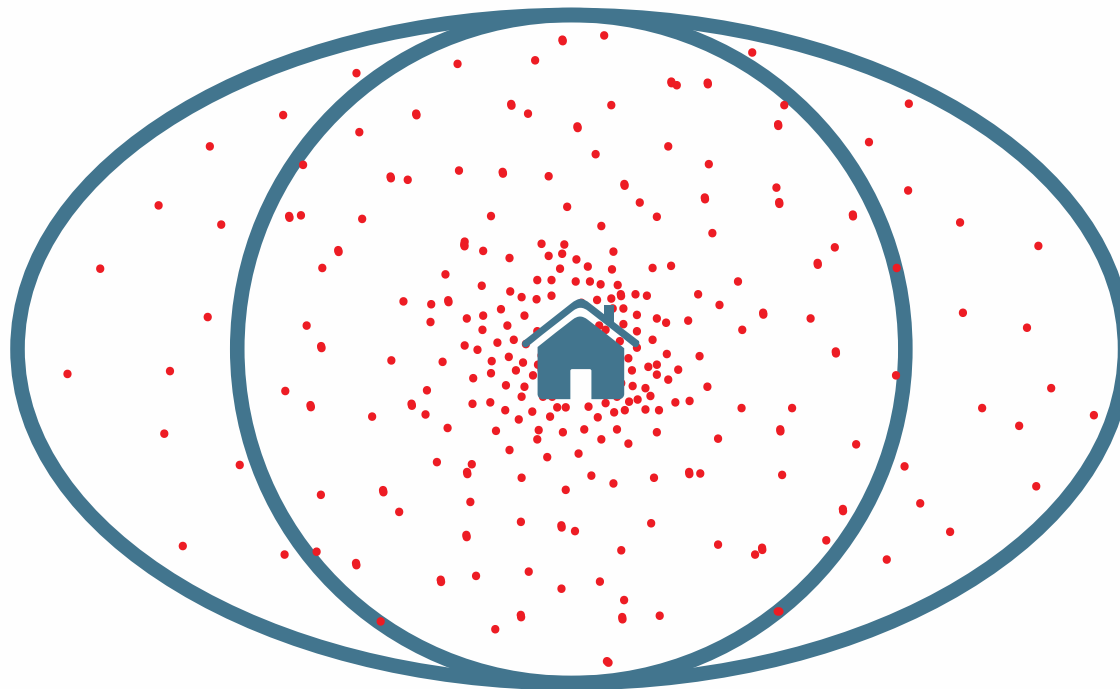
Layton

Outcomes

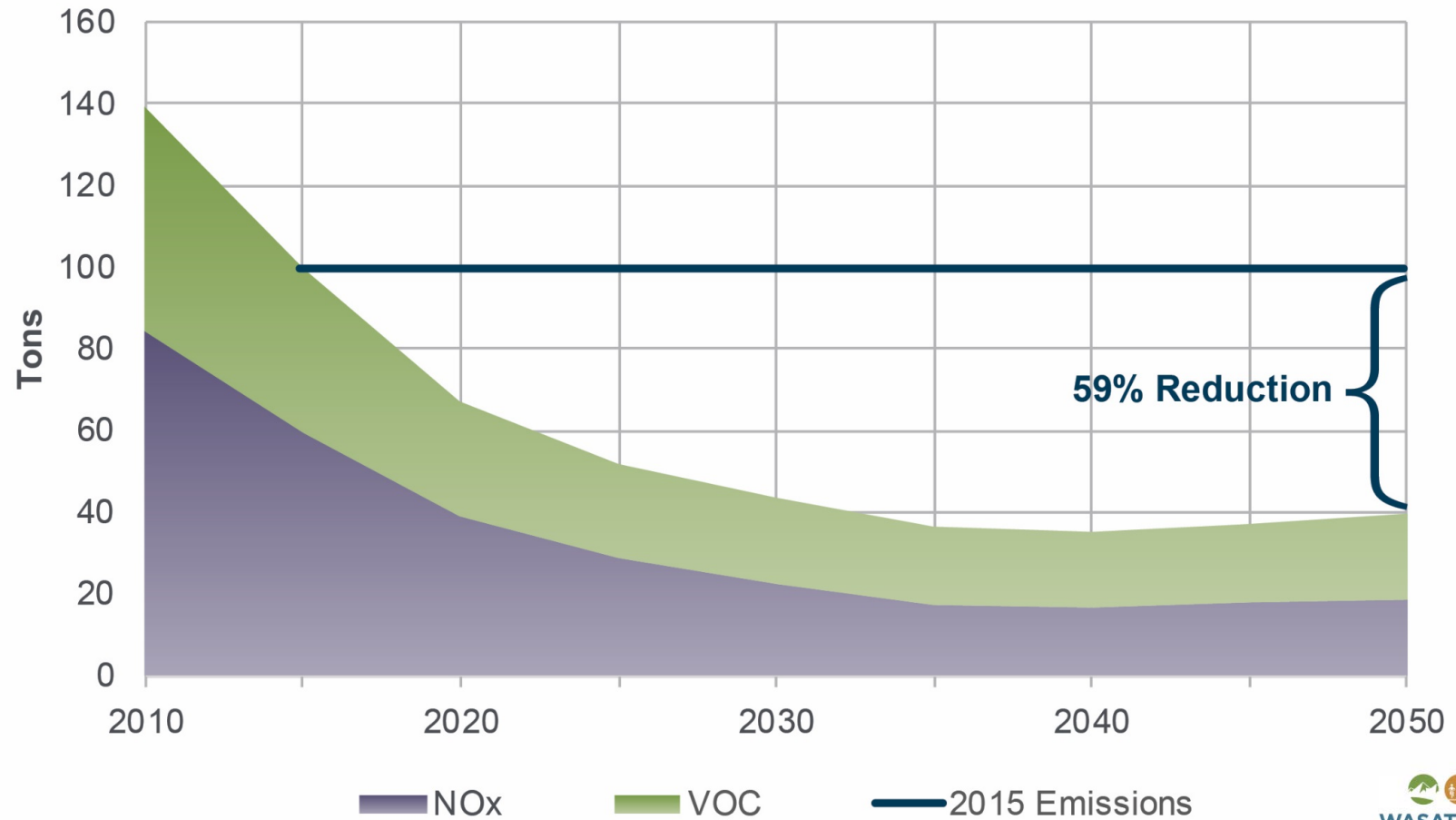


Outcomes: Better access to job opportunities

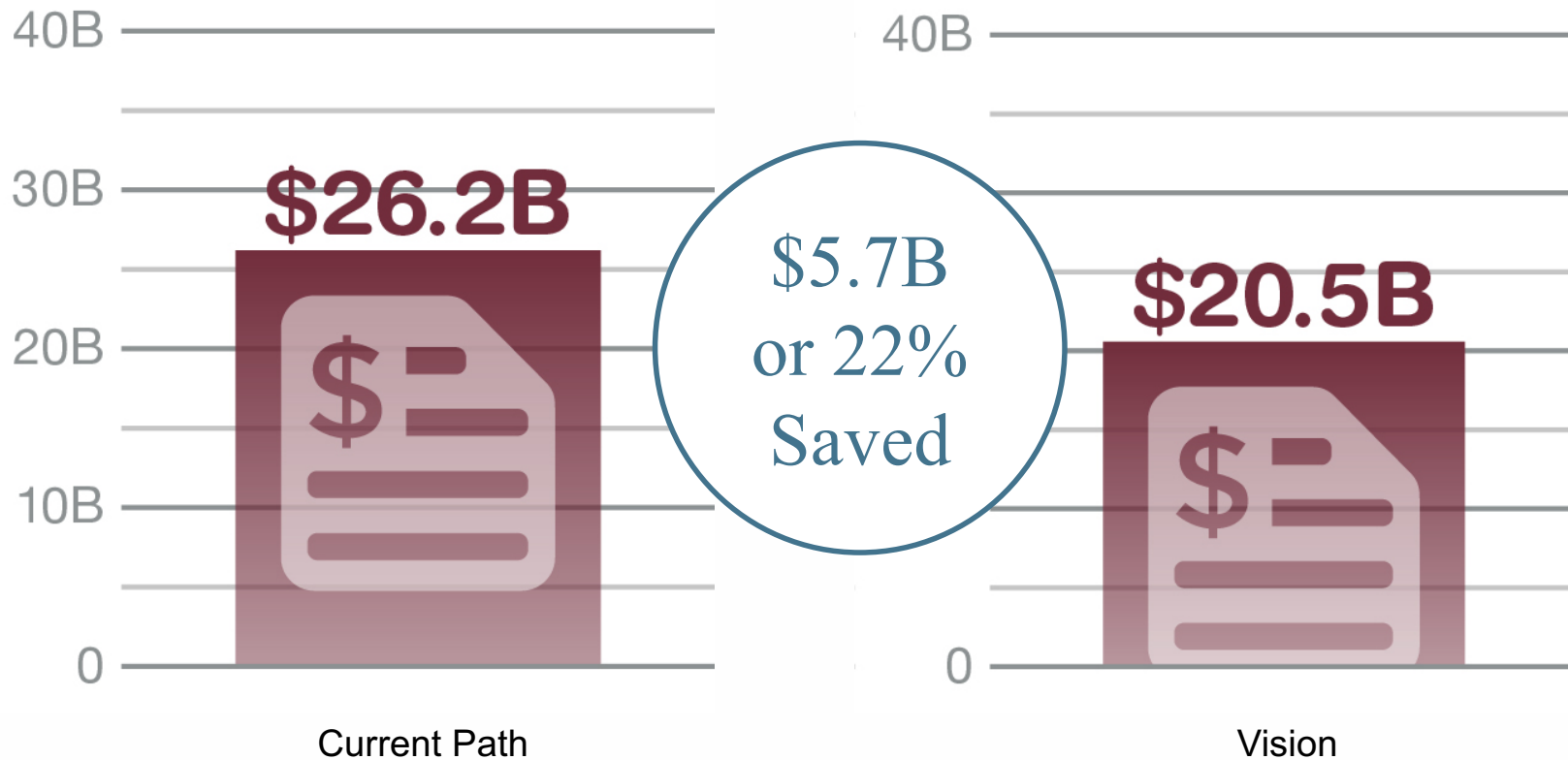
 +74%
+96K



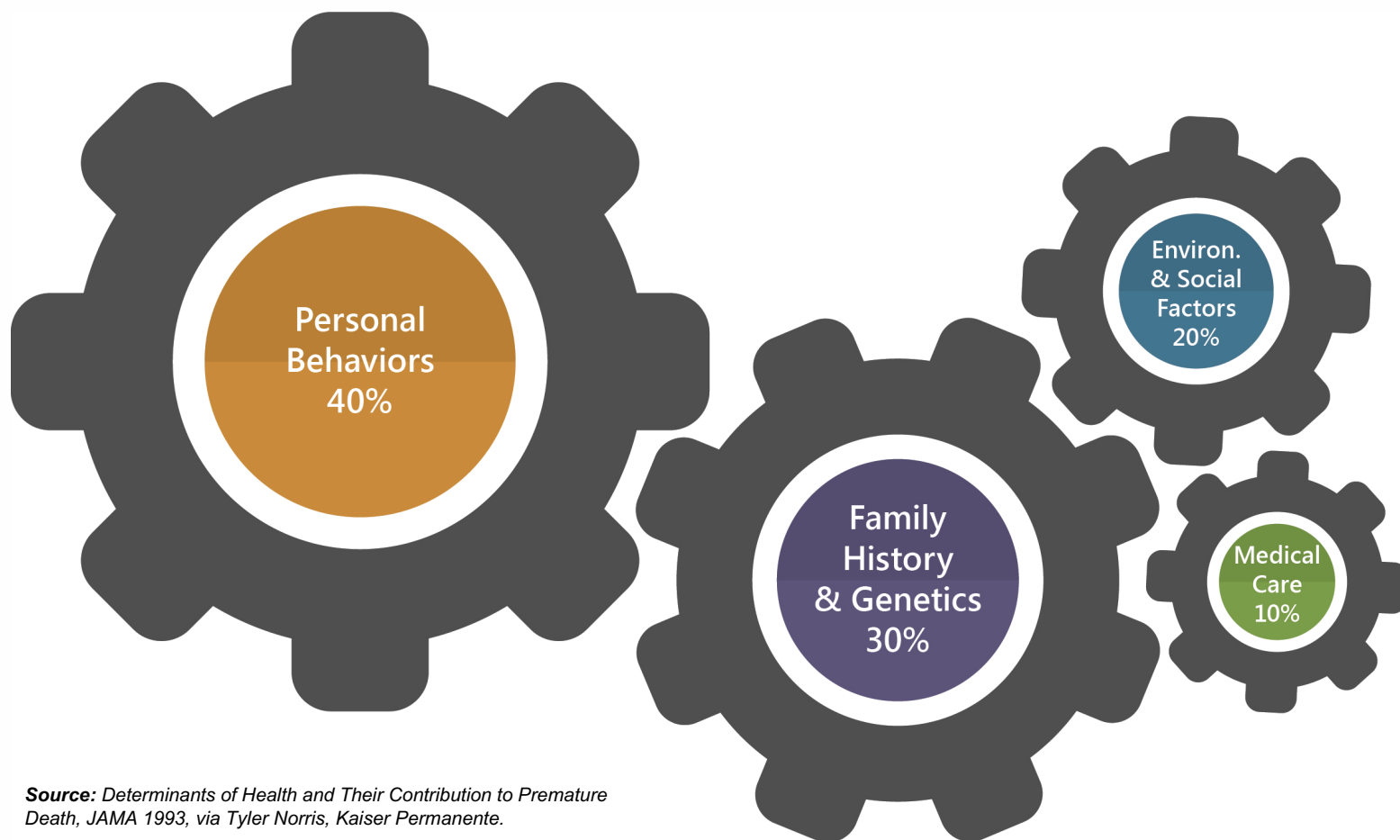
Outcomes: Cleaner Air



Outcomes: Local Infrastructure Savings



Outcomes: Improved Health



Source: *Determinants of Health and Their Contribution to Premature Death*, JAMA 1993, via Tyler Norris, Kaiser Permanente.

Wasatch Choice Strategies

1 Provide transportation choices

2 Support housing options

3 Preserve open space

4 Link economic development with transportation and housing decisions





WASATCH CHOICE

— 2050 —

